

# Deploying the Union Pacific Railroad Track Workspace

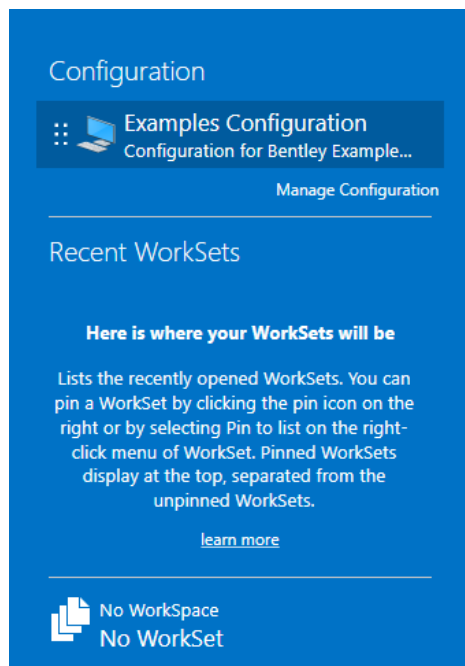
The delivered Union Pacific Railroad OpenRail Standards launch from a single configuration file (UPRR Track.cfg) and standards folder (UPRR Track). *UPRR Track.cfg* closely matches the out-of-the-box Bentley OpenRail Civil Imperial (Survey Foot) Standard Workspace and folder hierarchy consistent with OpenRail Designer Release 2024. A comparison for line item changes from the default configuration can be found in the supplement *ORD Civil Imperial Default and UPRR Workspace Compare – Diffchecker*. These edits are kept to a minimum, currently to track changes during major releases of OpenRail as configuration variables and standards folders update.

A few methods for deploying the workspace on a local drive or shared network location are detailed below. ProjectWise Administrator's should defer to current Bentley documentation to create a managed workspace for ProjectWise users.

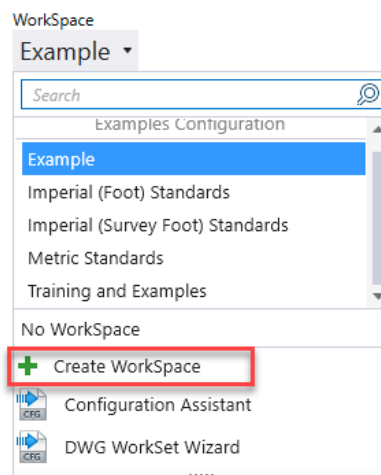
## Local Workspace and Standards Folder Creation

Hosting the workspace and standards on a local drive is typically not recommended because of the inability to manage global changes to the configuration or standards. However, this method can improve performance and limit bottlenecks caused by network latency or internet connections.

- Launch OpenRail Designer 2024 and expand the WorkSpace dropdown. Select "Create WorkSpace"



## OpenRail Designer 2024



- Create a “UPRR Track” workspace and leave default fields

**Create Workspace**

Name:

Description:

**Folder locations**

Root Folder:

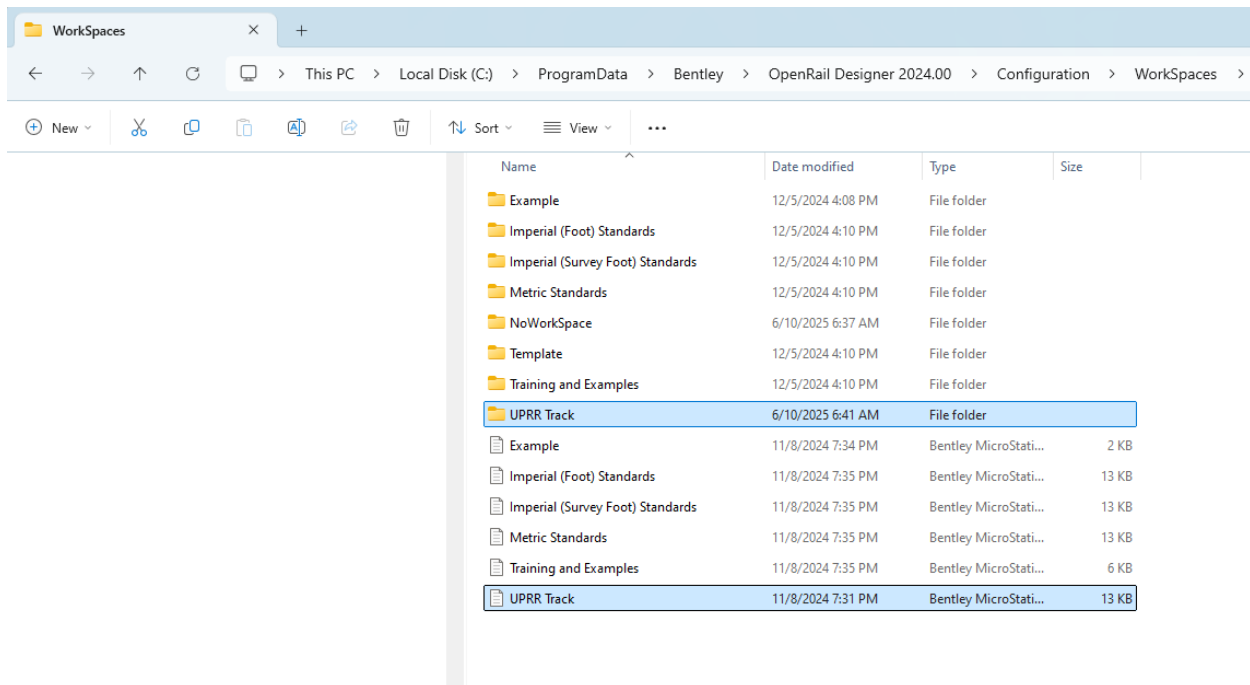
WorkSets Folder:

Standards Folder:

Standards Subfolders:

*By default, workspaces should be created under “C:\ProgramData\Bentley\OpenRail Designer 2024.00\Configuration\WorkSpaces\”*

- Copy the UPRR Track.cfg from the delivered configuration and overwrite the automatically created .cfg file. DO NOT replace the automatically created UPRR Track standards folder. Copy the standards folder and all subfolders to another location on local drive or OneDrive.



- Open the “UPRR Track.cfg” copied under the WorkSpaces folder. Edit the following line to reflect UPRR Track Standards file location and save the .cfg.

```

#-----
# Configuration File Version - 24.00.00
# Union Pacific Railroad Track Design Workspace
#-----

# Unit Definition
#-----
# The _Civil Default Standards - Imperial and _Civil Default Standards - Imp_Foot
# organization standards will use Imperial units and all other organization standards will use Metric units
# will use Metric units automatically with no changes required in this file.

UNITS                                = Imperial
#-----

#-----
# Folder Location Definition #EDIT BELOW
#-----
# The CIVIL_ORGANIZATION_STANDARDS variable defines where the Organization Standards
# are located. These can be located on a local computer or a shared network drive.
# To define these on a network drive, edit the WorkSpaceSetup.cfg file and change
# the CIVIL_ORGANIZATION_ROOT variable. NO changes are needed in this file.

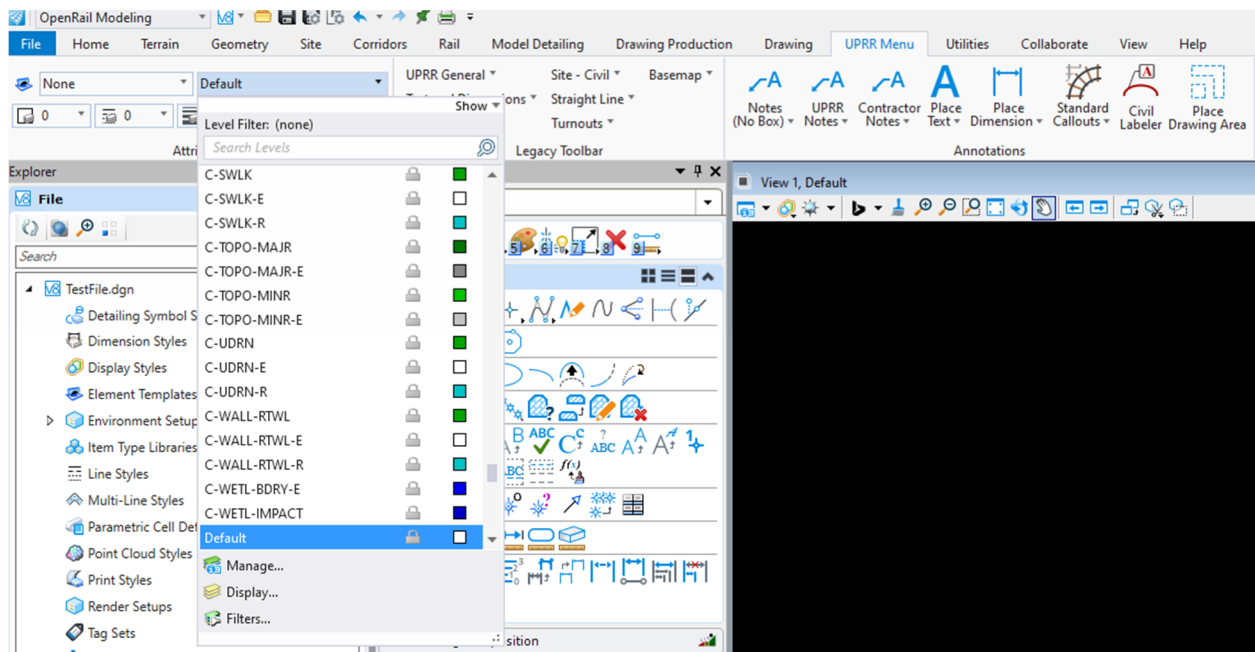
#CIVIL_ORGANIZATION_STANDARDS = $(CIVIL_ORGANIZATION_ROOT)$(CIVIL_ORGANIZATION_NAME)/
Out-of-box Standards Folder

#Change location below to standards location
CIVIL_ORGANIZATION_STANDARDS = 'Define Folder Path to UPRR Track Standards'
#-----

```

Replace with address to UPRR Track standards folder (e.g. 'C:/.../UPRR Track/')

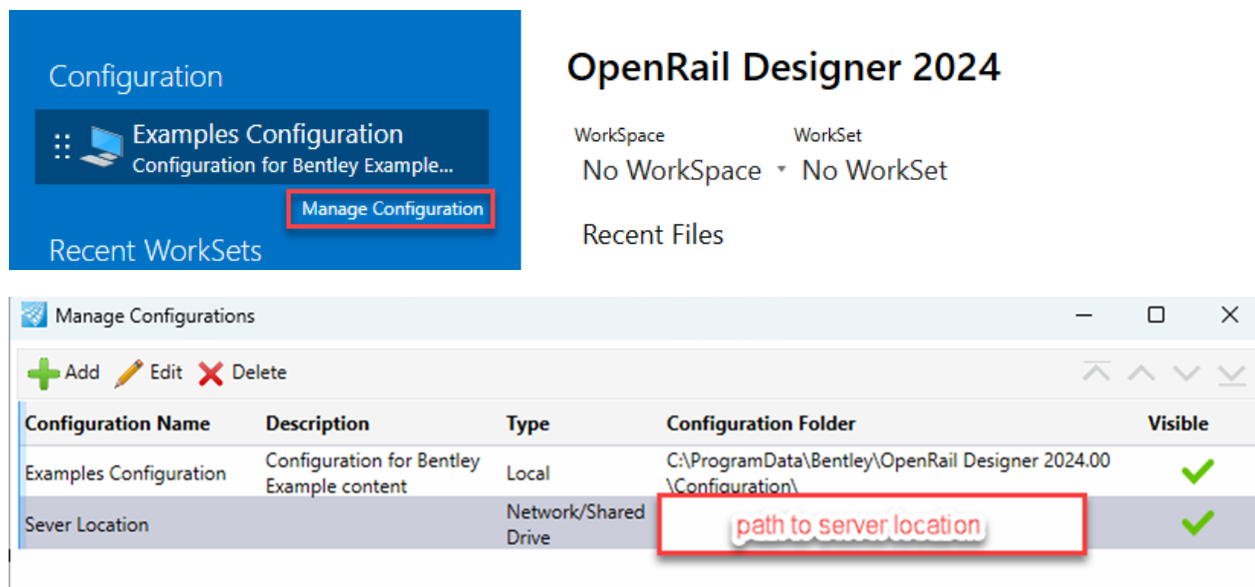
- Restart OpenRail Designer and create a new file with the UPRR Track workspace applied. The UPRR Menu and UPRR standard are visual cues the workspace has loaded.



## Shared Network Location

Separate option to launch UPRR Track Standards from a shared network location. This method limits the need for individual users to edit Program Data files under OpenRail on their C drive. It is recommended to host the workspace and standards in a location that minimizes network latency for OpenRail users.

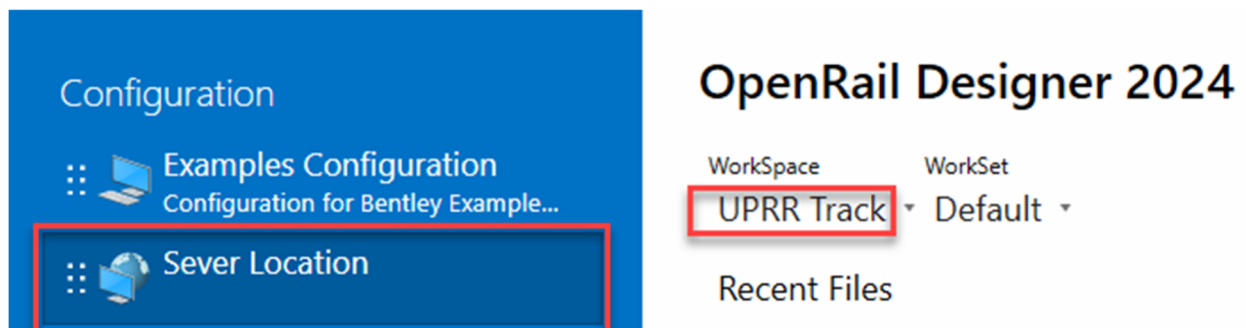
- Copy “UPRR Track.cfg” and “UPRR Track” standards folder under a Workspaces subfolder on a shared drive. This may be the same location as other organization workspaces for non-ProjectWise users.
- Launch OpenRail and click Manage Configuration. Follow the prompts to establish a Network/Shared Drive connection. The configuration folder should be one level up from the “Workspaces” folder (e.g. S:\...\ORD Configuration\Workspaces\UPRR Track.cfg)



The screenshot shows the OpenRail Designer 2024 Configuration window. On the left, the 'Configuration' pane has 'Manage Configuration' highlighted. The main window displays the 'Manage Configurations' dialog with a table of configurations.

Configuration Name	Description	Type	Configuration Folder	Visible
Examples Configuration	Configuration for Bentley Example content	Local	C:\ProgramData\Bentley\OpenRail Designer 2024.00\Configuration\	✓
Sever Location		Network/Shared Drive	path to server location	✓

- Toggle the Configuration to path from the out-of-the-box C drive location under Program Data to the Server Location. The UPRR Track workspace should be an available workspace in the dropdown as a cue the folder path works correctly.



The screenshot shows the OpenRail Designer 2024 Configuration window. On the left, the 'Configuration' pane has 'Sever Location' highlighted. The main window displays the 'Workspace' dropdown menu, which now includes 'UPRR Track'.

Workspace: UPRR Track (selected) | WorkSet: Default

- Create a new file with the UPRR Track workspace applied. The UPRR Menu and UPRR standard are visual cues the workspace has loaded.

